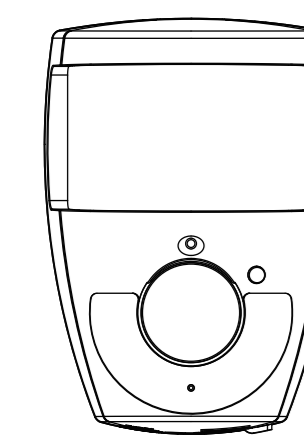
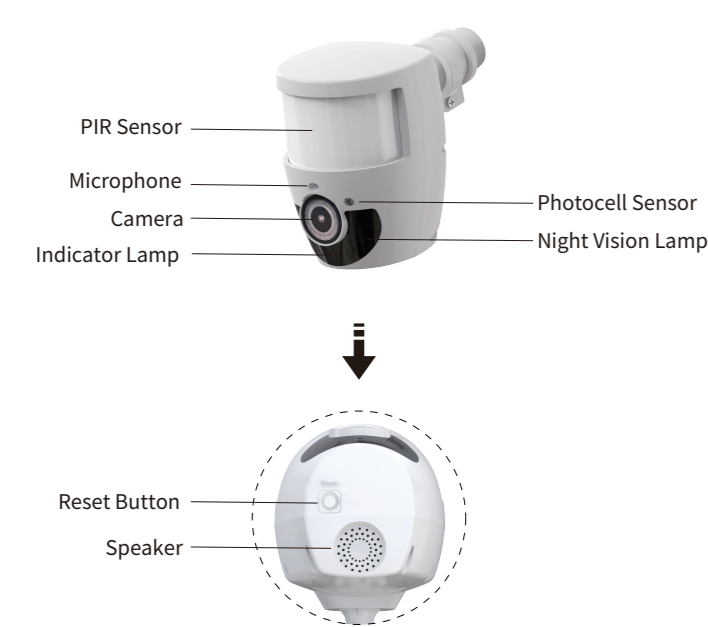


INSTRUCTION MANUAL

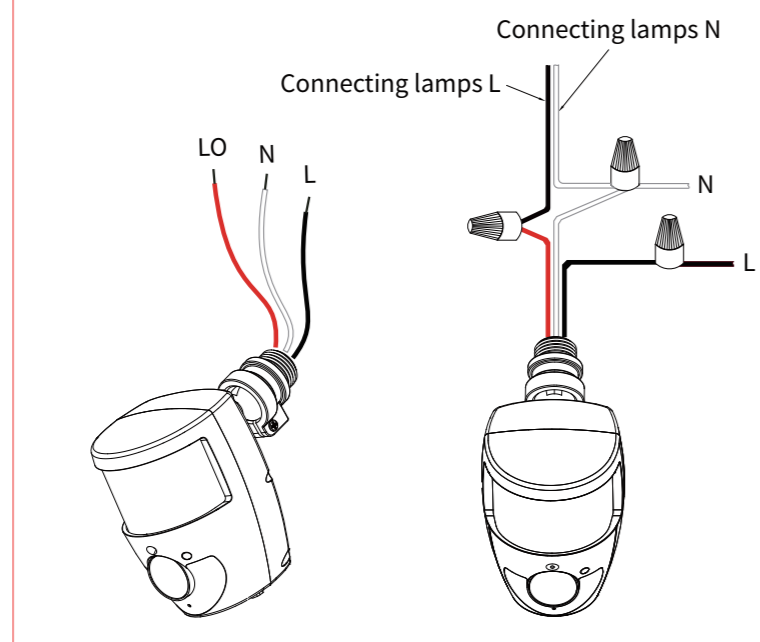


Smart Camera

Product function diagram >>>



Camera wiring diagram >>>



Camera Kit Parameter

Power Supply	Isolated power supply
PSU	50/60Hz
Rated Power	0.2W
Power Factor	≥0.9
Rated Voltage	AC100-277V

Camera Parameter

Resolution	1920*1080
Pixel	200W
Video Format	PAL/NTSC
Audio Output	Build-in Loudspeaker
Audio Input	Build-in Microphone
Lens	Mega HD Camera
Number of Frames	25

Camera Kit Parameter

Message Transfer MODE	App background push message
Video mode	Manual video, real time observing video, timing video, alarm video
Storing mode	Cloud storage, support Amazon cloud, Google cloud
Visiting mode	IE, Mobile phone, Pad, Computer
Infrared sensing distance	0-100 degree 10-15m, 100-130 degree 7-10m
Connecting mode	WiFi
Infrared sensing angle	0-130 degree
Focal Length	2.8mm
APP	Westgate
IP Rate	IP65
Product Compatibility	Google Assistant, Amazon Alexa

Product Functions

- Live Broadcast
- Take Photos
- Album
- Motion Detection Switch
- Alarm Message Notice
- Courtyard Timing Switch on/off
- Cloud Storage/Value Added Service
- Video Recording
- Live Screen Zoom
- Private Mode
- Live Broadcast
- Definition Switching
- Thematic Color
- PIR Sensitivity Switch
- Two-Way Talk
- Timing
- AUTO
- One-Click Alarm
- Courtyard Light Switching on/off
- Infrared Night Vision

Safe Operation Instruction

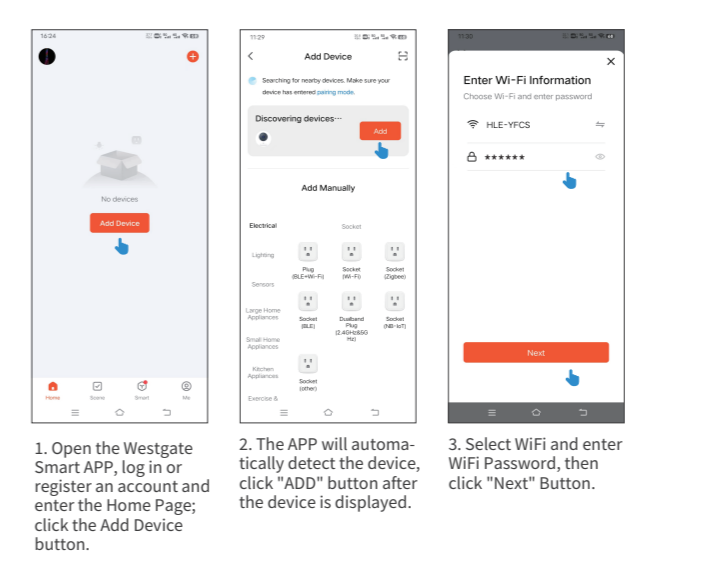
1. To reduce the risk of death, personal injury, property damage caused by fire, electric shock, falling parts, cuts, bruises and other hazards, please read the warnings and instructions on the label.
2. Please follow the usual protective measures before installing, repairing and maintaining the Camera Kit.
3. The commercial installation, repair and maintenance of the camera kit must be operated by a professionally qualified electrician.
4. The installation of cameras in residential areas: If you are not very familiar with the installation or maintenance of cameras, please consult a professional qualified electrician.
5. Keep out of reach of children in a safe place to prevent danger.
6. These operating instructions do not claim to contain all details and changes in the equipment, or to provide every possible emergency measure to achieve correct installation, application and maintenance.
7. Disconnect the power fuse or circuit breaker before the camera kit is connected to the power supply.
8. Ensure that the input voltage is within the correct and reasonable range. Connect the camera to the AC100-277V 50/60Hz power supply.
9. Ensure that all wires and ground connections comply with national electrical standards and applicable local specifications.
10. All wires must be connected with CE certified connection terminals.

APP Download

- This product can be controlled by Westgate Smart. Please download the Westgate Smart APP from App-Store or Google play store to your smartphone. You can also scan the QR code on the right, the APP icon will be displayed after successful installation.

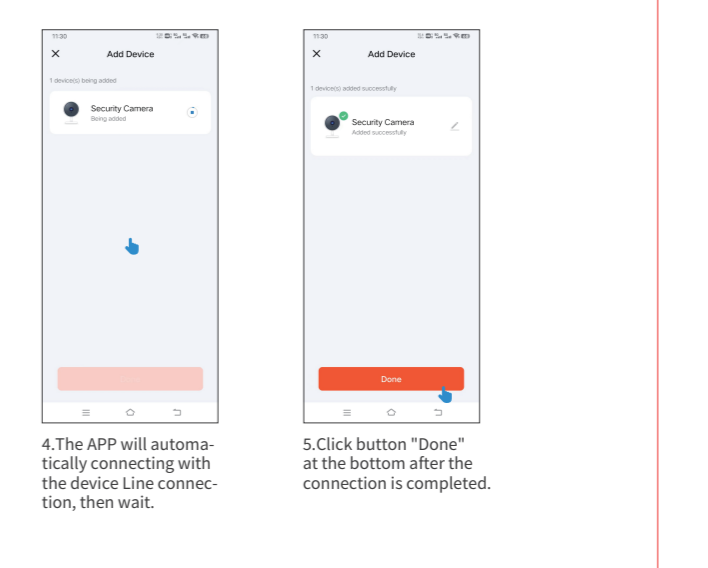


A. Add devices



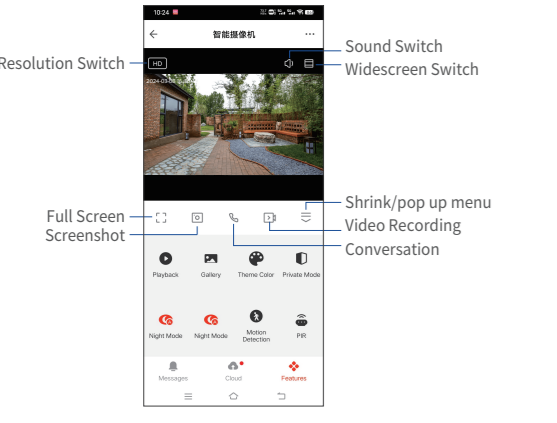
1. Open the Westgate Smart APP, log in or register an account and enter the Home Page, click the Add Device button.
2. The APP will automatically detect the device, click "ADD" button after the device is displayed.
3. Select WiFi and enter WiFi Password, then click "Next" Button.
4. The APP will automatically connecting with the device. Line connection, then wait.
5. Click button "Done" at the bottom after the connection is completed.

D. Set up a two-way call



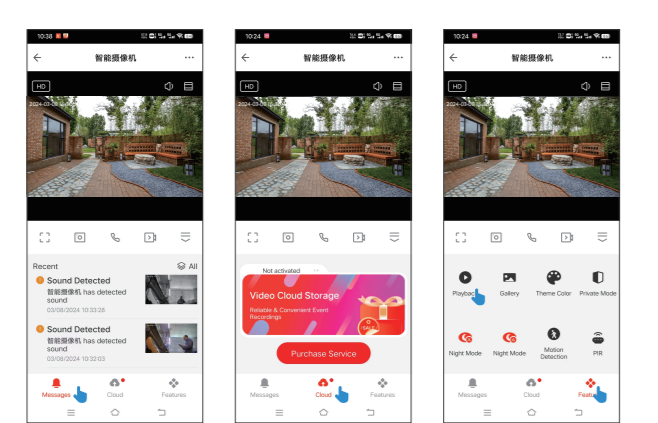
- The default setting of APP is one-way call, if you want to set it into two-way call, pls follow up the following steps: Click the three dots in the upper right corner to enter into the Settings page, click on the "Basic Function Settings" button, and select "Two Way Talk" to click it.

B. Control Page Introduction

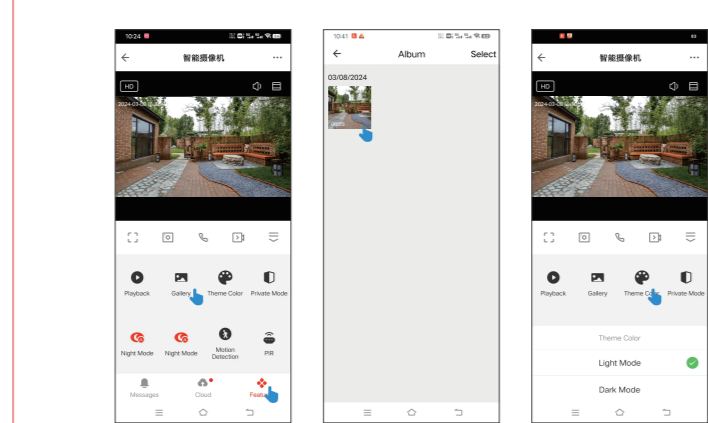


- Resolution switch:** You can choose HD or SD, the default is HD
- Sound switch:** Turn on or off the sound of the device
- Widescreen switch:** Turn on or off the widescreen display
- Full screen:** Turn on or off full screen display
- Screenshot:** Capture image and save to album
- Shrink/Pop up the menu:** When the menu is expanded, click to shrink the menu, when the menu is shrink, click to expand the menu
- Video Recording:** Record video and save to phone
- Conversation:** Conversations between the app and the device

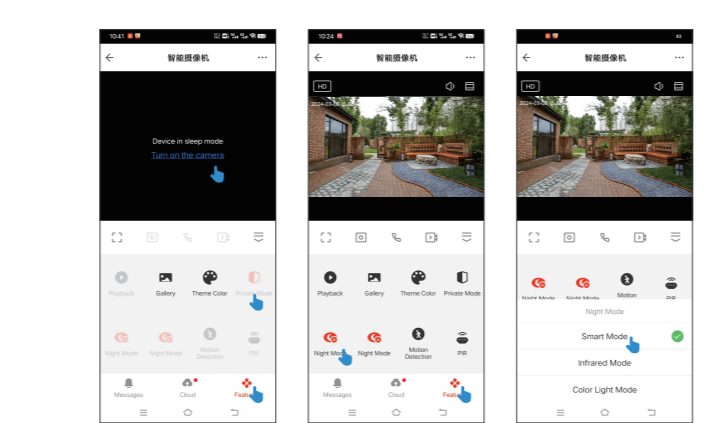
C. Function Operation Instruction



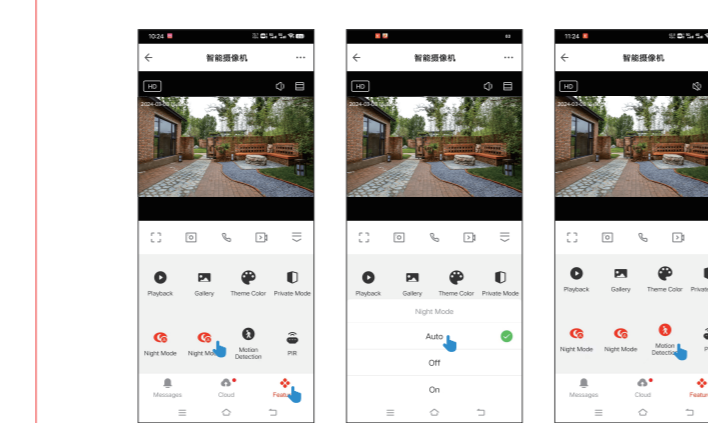
- Click on the "Message" button, you can view alert message pushed by App.
- Click on the "Cloud" button to buy Cloud storage service which will record the video file storage to cloud space.
- Click on the "Features" button, then click on the "Playback" button to play back recorded videos previously.



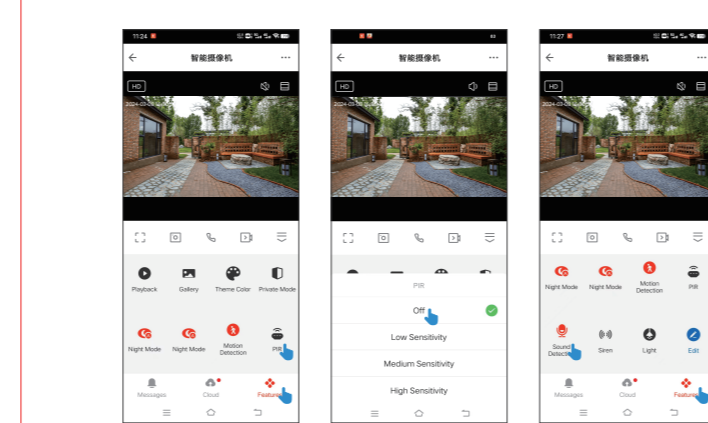
- Click on the "Features" button and then click on the "Gallery" button to view the pictures saved to the album.
- Click on the "Features" button and then click on the "Theme Color" button to select either "Light Mode" or "Dark Mode".



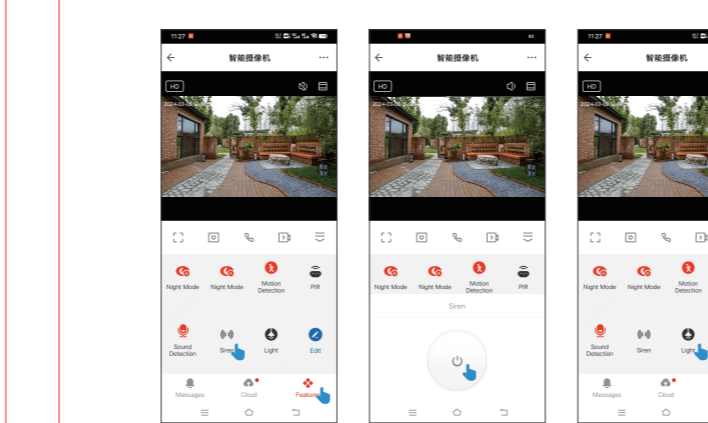
- Click on the "Features" button, then click on the "Private Mode" to turn off the camera and enter into the sleep state. To wake up the camera, click "Turn on the camera" on the screen to turn the camera on again.
- Click on the "Features" and then click on "Night Mode" button, you can choose "Smart Mode", "Infrared Mode", "Color Light Mode".



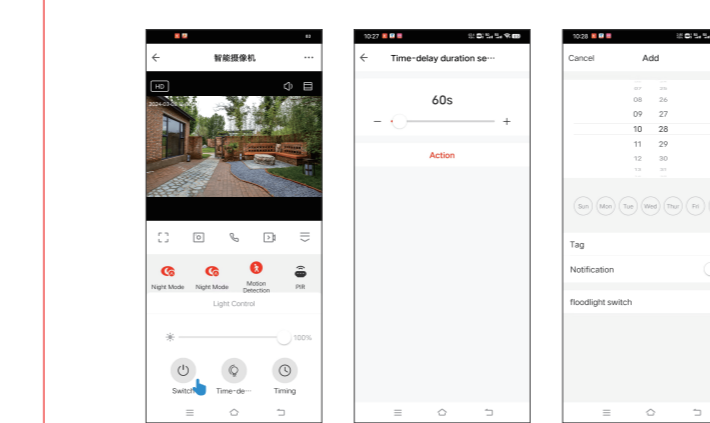
- Click on the "Features" button and then click "Infrared Night Vision" to turn on or off the infrared right vision function. The default mode is AUTO.



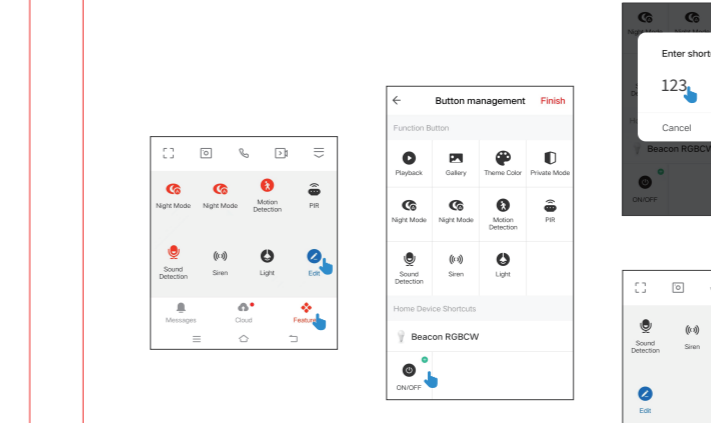
- Click on the "Features" button and then click on the "Motion Detection" button to turn on the "Motion Detection" switch to automatically record video and push messages when movable animals are detected.
- Click on the "Features" button and then click "PIR" button to turn PIR sensing on or off and select PIR sensitivity, including low sensitivity, medium sensitivity, and high sensitivity.



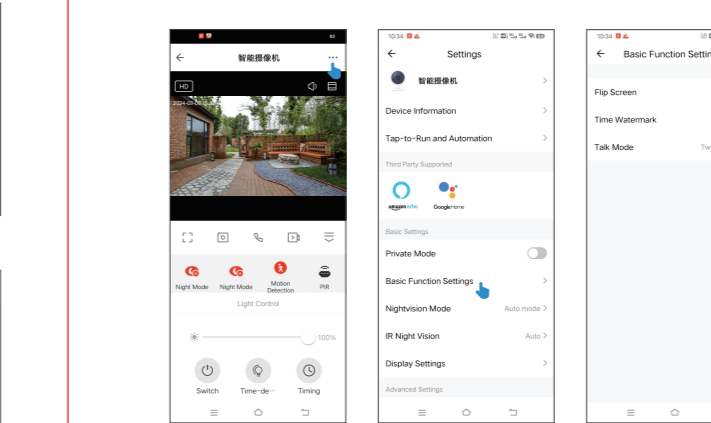
- Click on the "Features" button and then click on the "Sound Detection" button to turn on or off the sound detection function, when the sound is turned on the sound detection function, the camera will push a notification message when it detects a sound.
- Click on the "Features" button and then click on the "Siren" function to turn on or off the siren function. When the siren function is turned on, the device will sound a siren to scare away unknown visitors.



- Click on the "Switch" button to switch on/off the light.
- Drag the slider or press the Add or subtract button to adjust the delayed turning on time. The default is 60s.

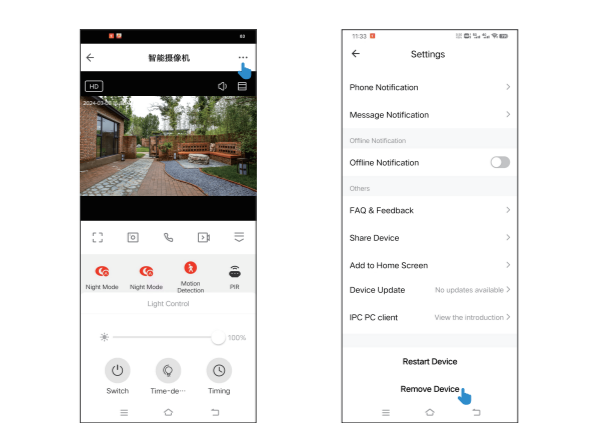


- Timing switch on and off light setting: first select the week and then select the time, then select turn on or turn off the light operation, click the above "save" button, the set time will be performed after the set operation.



- When other Westgate devices are added to the APP, you can add shortcut control buttons for other devices on the page for easy linkage operation. For example, when the APP adds another downlight, you can click on the "Features" button and then click on the "Edit" button, you can see the added downlight device at the bottom of the page, click the "Add" sign in the upper right corner of the downlight to customize the name, such as entering 123, click on the "Confirm" button to complete. Then there will be an additional button at the bottom of the "Features" page to control the switch of the downlight.

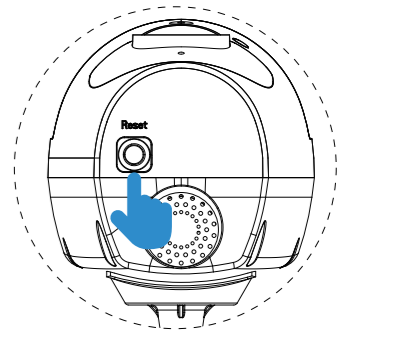
E. Unbind the device



- When you need to unbind the APP from the smart camera, you can click the three dots in the upper right corner of the Device control home page to enter the Settings page, drag to the bottom of the page, and click the "Remove Device" button to unbind the device.

F. Restore Factory Settings

- When you need to restore factory Settings, first connect the device to the power supply, hold down the reset button on the bottom of the camera, release the reset button until the camera makes three beeps, and the camera has been restored to factory Settings. It is recommended to press the reset button to restore the factory Settings before connecting APP to the camera.



If the manual interface does not match with the APP, pls refer to the APP. Tip: Keep up to date with the latest software version for a better experience.